



# Santa Paula Shopping Center

550 - 660 West Main Street  
Santa Paula, CA 93060 (34.34481506, -119.08100222)



## Leasing Representative

**Brian Baker**

(858) 202-1109

brian.baker@brixmor.com

## Western Regional Office

3636 Nobel Drive, Suite 300

San Diego, CA 92122 (858) 457-1847

**GLA:** 191,475

**County:** Ventura

**MSA:** Oxnard-Thousand Oaks-Ventura, CA

**Major Tenants:** Von's, CVS, Big Lots, Dollar Tree, Regency Theaters, Heritage Hardware, Susie's Deals

Demographics	1 Mile	3 Mile	5 Mile
Population	12,469	29,009	33,932
Households	3,396	8,185	9,778
Avg HH Income	\$54,760	\$63,945	\$66,460

Demographics source: AGS 2011A Estimates

## Available Space

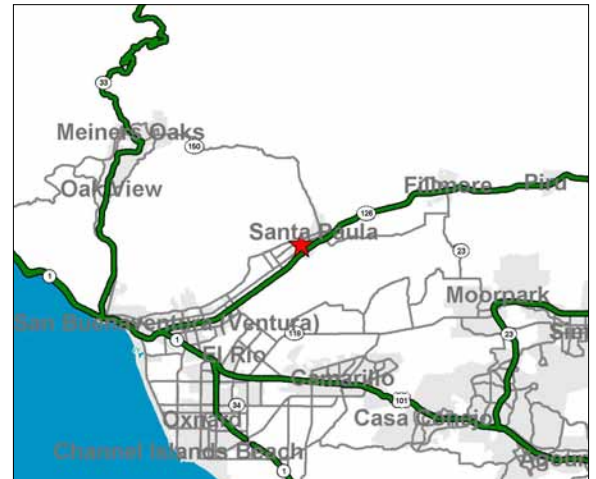
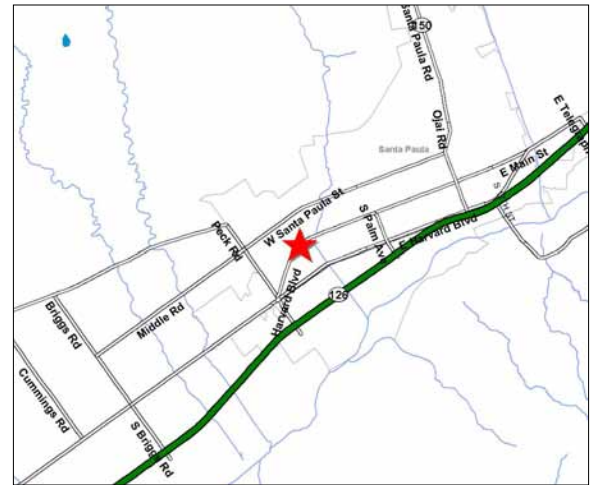
100% Leased

2,950 sf

Located on Harvard Street, the main arterial thoroughfare in the city of Santa Paula.

The dominant shopping center in Santa Paula.

Located just north of the Santa Paula Fwy (Hwy 126), on the NW corner of Telegraph Rd (W Harvard Blvd) and S Steckel Dr.



# Santa Paula Shopping Center Santa Paula, CA



GLA: 191,475

Major Tenants: Von's, CVS, Big Lots, Dollar Tree, Regency Theaters, Heritage Hardware, Susie's Deals

